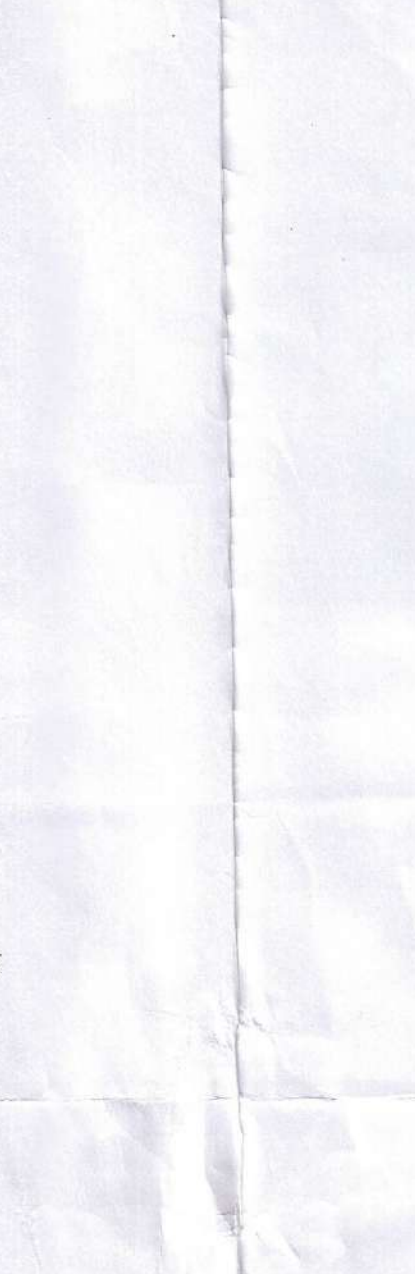


SECTION THROUGH AA
SCALE - 1:50



SEWAGE TREATMENT PLANT PLAN AT LEV. P.P.
SCALE - 1:50

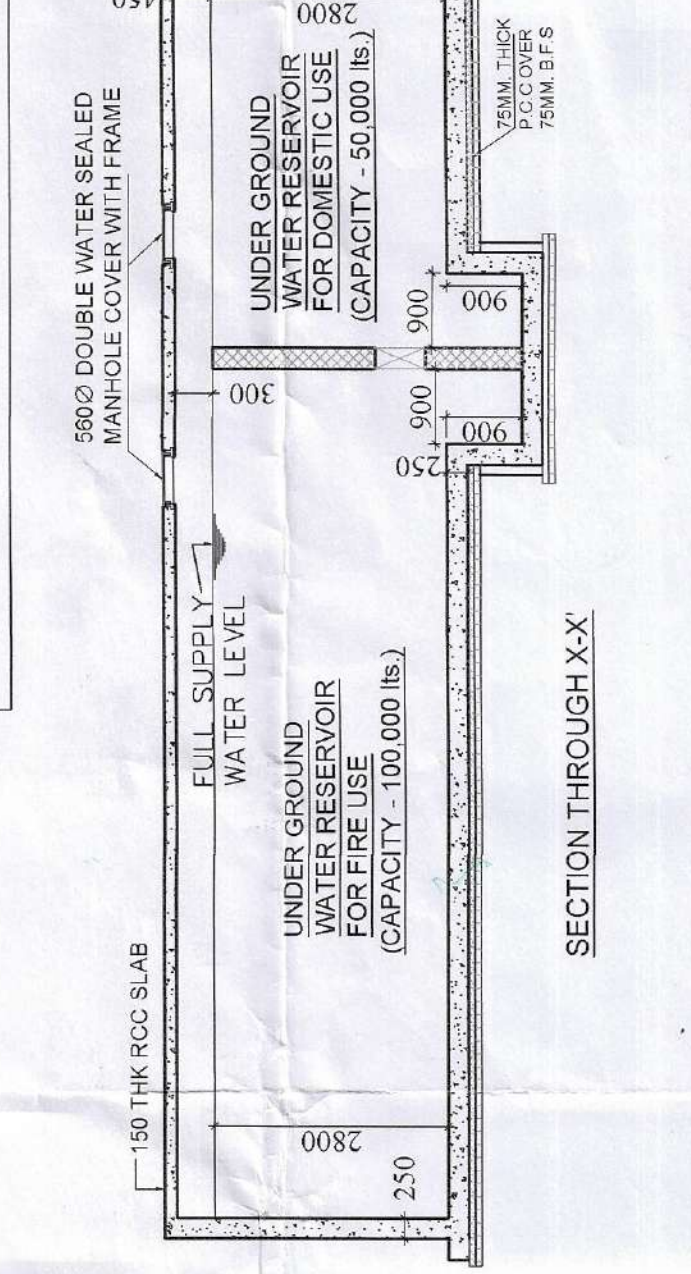
PROJECT: PROPOSED GROUND + 5 STORED RESIDENTIAL CUM COMMERCIAL BUILDING
NAME OF OWNERS: 1. SRI SATISH KUMAR GOYAL
2. SRI RATAN AGARWAL
3. SMT SUNITA AGARWAL
4. PREMBHOG FOOD PRODUCTS PRIVATE LIMITED

LOCATION: AT KALCHAKRA MANDIR ROAD, SALUGARA, SILIGURI.
SCHEDULE OF LAND: MUDA, PLOT NO. 02, R.S. - 108, 119, L.R. - 96, 97, KHATAN NO. - 3/6(S), 4(L, R), SHEET NO. - PARGANA - BHAKTINAGAR, P.S. - JALPAIGURI, DIST. - JALPAIGURI.

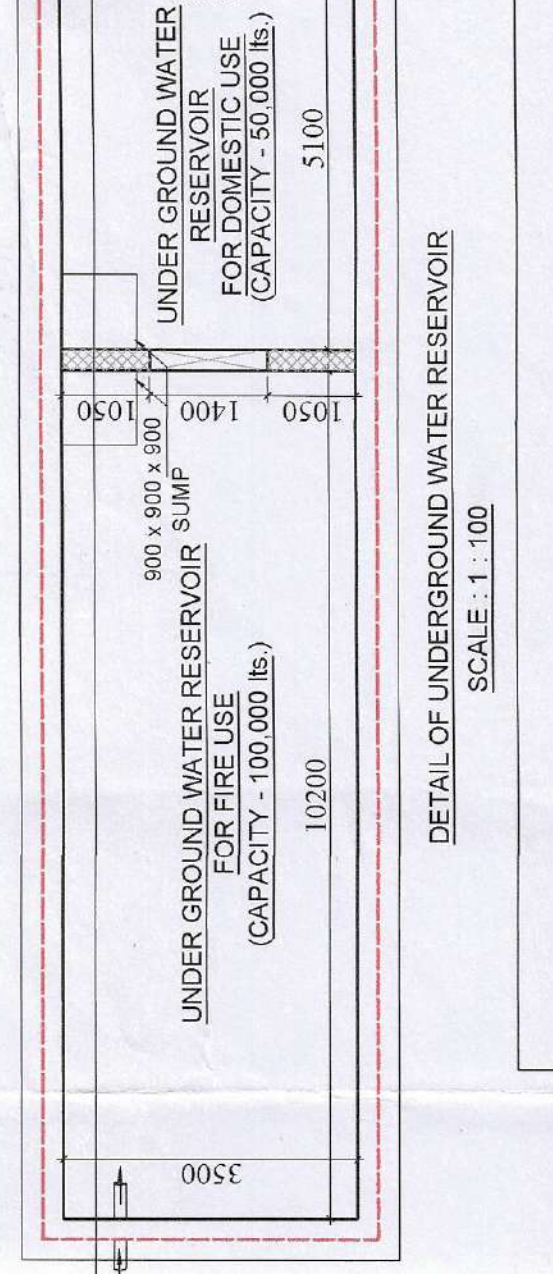
AREA STATEMENT
1. AREA OF LAND (AS PER DEED) :- 6962.206 SQ.M
2. PERMISSIBLE GROUND COVERAGE :- 2827.850 SQ.MIT (40.60%)
3. PROPOSED GROUND COVERAGE :- 2826.690 (40.63%)
4. TYPICAL FLOOR AREA :- 2771.138 SQ.M
5. 8TH FLOOR AREA :- 2866.024 SQ.M (EACH)
6. 7TH FLOOR AREA :- 2986.389 SQ.M
7. TOTAL FLOOR AREA :- 15863.589 SQ.M
8. PERMISSIBLE F.A.R. :- 2.24
9. TOTAL RESIDENTIAL AREA :- 15783.445 SQ.M
10. TOTAL COMMERCIAL AREA :- 202.143 SQ.M (1.24% OF T.F.A) AT GROUND FLOOR
11. NO. OF NOS. :- 108 NOS.
12. PARKING PROVIDED :- 400 (VEHICLED-165, OPEN-14)
13. PERMISSIBLE HEIGHT OF BUILDING :- 19.875 M.
14. NO. OF TENEMENT :- 133 NOS.
15. GREEN AREA REQUIRED :- 646.325 SQ.M (9.10%)
16. GREEN AREA PROPOSED :- 688.923 SQ.M (9.89%)
17. OCCUPANCY/USE OF BUILDING :- RESIDENTIAL
18. L.U.C.C. MEMO NO. :- 3556/SJ/A DATED - 11.12.2019

TENEMENT AREA DETAILS
WING - 1
1. FLAT - A (1st to 8th FLOOR) = 95.23 SQ.M (EACH)
2. FLAT - B (1st to 8th FLOOR) = 107.78 SQ.M (EACH)
3. FLAT - C (1st to 8th FLOOR) = 87.48 SQ.M (EACH)
4. FLAT - D (1st to 8th FLOOR) = 85.89 SQ.M (EACH)
5. FLAT - E (1st to 8th FLOOR) = 83.28 SQ.M (EACH)
WING - 2
1. FLAT - F (1st to 8th FLOOR) = 85.57 SQ.M (EACH)
2. FLAT - G (1st to 8th FLOOR) = 97.91 SQ.M (EACH)
3. FLAT - H (1st to 8th FLOOR) = 87.53 SQ.M (EACH)
4. FLAT - I (1st to 8th FLOOR) = 83.59 SQ.M (EACH)
5. FLAT - J (1st to 8th FLOOR) = 91.58 SQ.M (EACH)
WING - 3
1. FLAT - K (1st to 8th FLOOR) = 83.16 SQ.M (EACH)
2. FLAT - L (1st to 8th FLOOR) = 104.38 SQ.M (EACH)
3. FLAT - M (1st to 8th FLOOR) = 87.53 SQ.M (EACH)
4. FLAT - N (1st to 8th FLOOR) = 87.53 SQ.M (EACH)
5. FLAT - O (1st to 8th FLOOR) = 83.11 SQ.M (EACH)
WING - 4
1. FLAT - P (1st to 4th FLOOR) = 86.84 SQ.M (EACH)
2. FLAT - Q (5th FLOOR) = 106.23 SQ.M (EACH)
3. FLAT - R (1st to 8th FLOOR) = 85.87 SQ.M (EACH)
4. FLAT - S (1st to 8th FLOOR) = 72.28 SQ.M (EACH)
WING - 5
1. FLAT - T (1st to 8th FLOOR) = 81.18 SQ.M (EACH)
2. FLAT - U (1st to 8th FLOOR) = 74.49 SQ.M (EACH)
3. FLAT - V (1st to 8th FLOOR) = 82.44 SQ.M (EACH)
4. FLAT - W (8th FLOOR) = 102.933 SQ.M (EACH)
WING - 6
1. FLAT - X (1st to 8th FLOOR) = 86.93 SQ.M (EACH)
2. FLAT - Y (1st to 8th FLOOR) = 103.32 SQ.M (EACH)
3. FLAT - Z (1st to 8th FLOOR) = 87.59 SQ.M (EACH)
4. FLAT - AA (1st to 8th FLOOR) = 87.71 SQ.M (EACH)
5. FLAT - AB (1st to 8th FLOOR) = 82.99 SQ.M (EACH)
TOTAL TENEMENT AREA OF ALL WINGS = 11389.883 SQ.M.

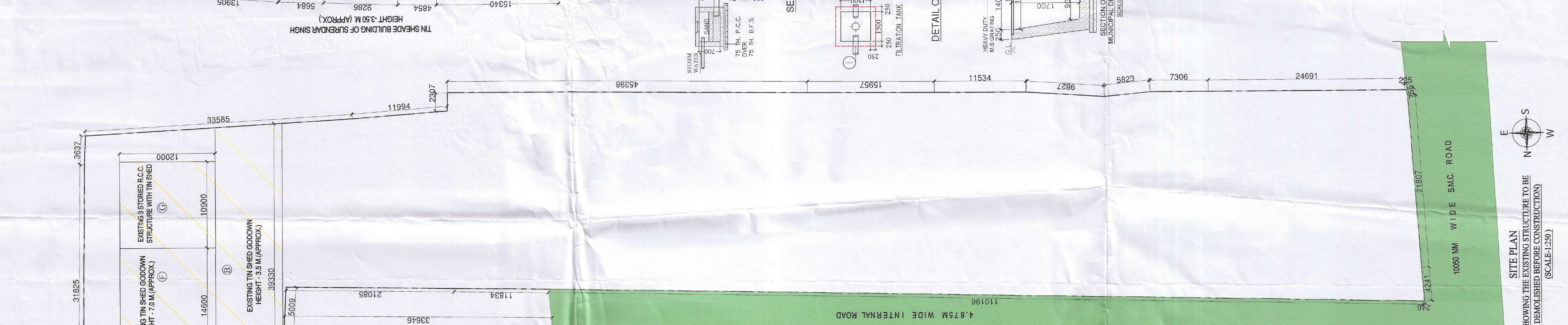
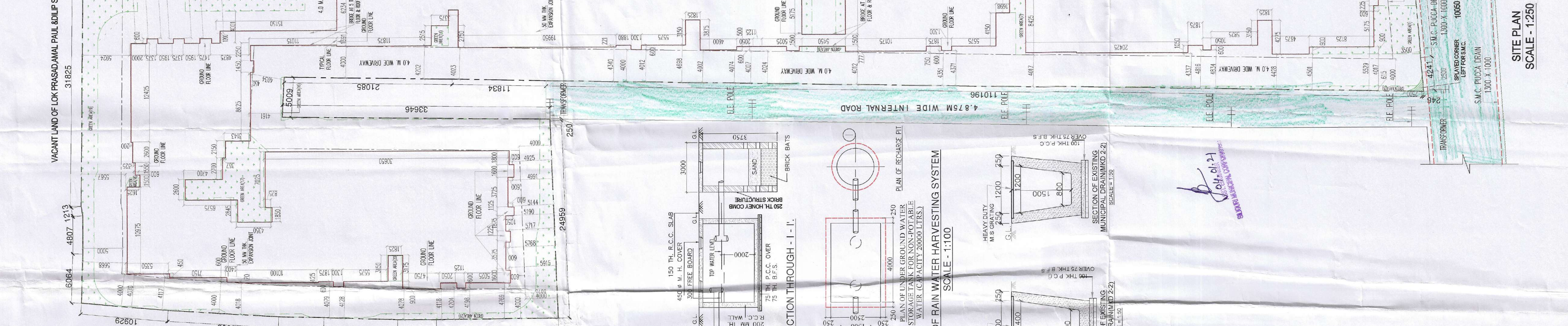
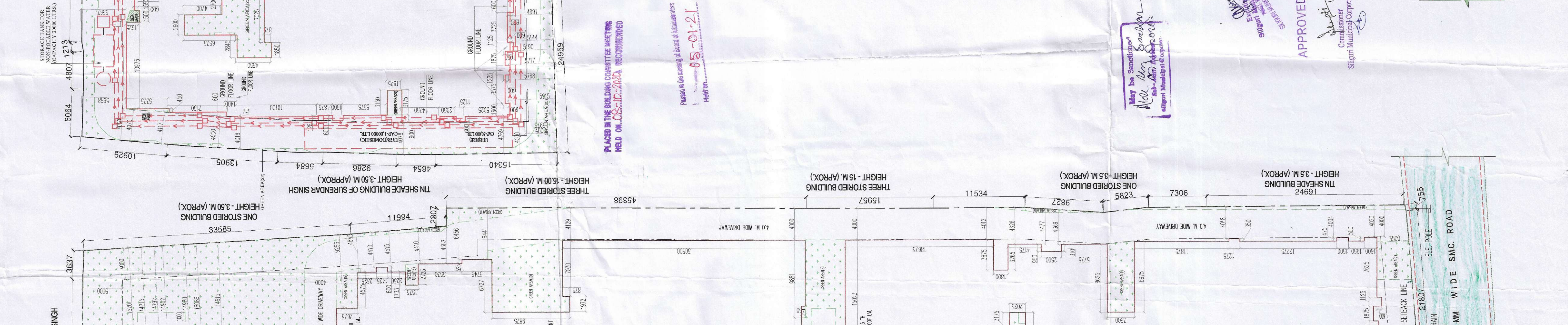
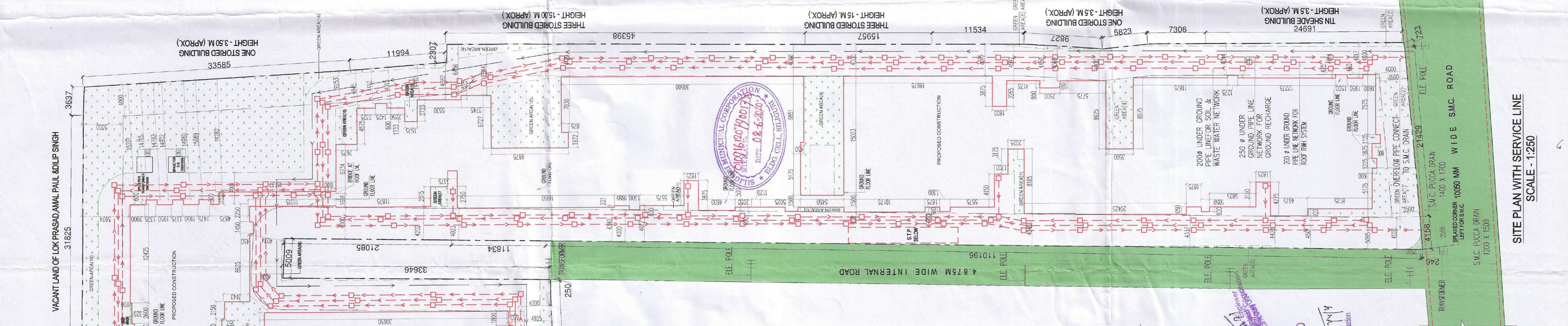
APPROVED
M. S. Saha
Member, Siliguri Municipal Corporation



SECTION THROUGH XX



LOCATION PLAN (NOT TO SCALE)
Map showing the site location relative to landmarks like 'KALCHAKRA MANDIR ROAD', 'SALUGARA', and 'M. S. Saha'.



AREA OF EXISTING STRUCTURE TO BE DEMOLISHED BEFORE CONSTRUCTION

AREA	AREA
A	679.52 SQ.M
B	328.42 SQ.M
C	13.33 SQ.M
D	73.15 SQ.M
E	78.00 SQ.M
F	175.2 SQ.M
G	130.8 SQ.M
TOTAL	1478.42 SQ.M